

Our reference: P13023/CL5

19 May 2021

Blue Sun Poles Pty Ltd  
PO Box 1683  
Coorparoo DC Qld 4151

Attention of Paul Davis

**Re: Property Pole 6.0/8.0m – 3.5 kN**

This is to certify that the Property Pole with footing as detailed on the respective drawings listed below is structurally adequate to carry the nominated service point load at the top through the eye bolt.

Blue Sun Poles Drawing *BS-EGXPP6M3P-210222 Rev D dated 22.02.21*

Blue Sun Poles *Footing Guide-6m,8m 3.5 kN Property Service Pole Rev B dated 22.02.21*

The relevant Australian Standard Codes referred to are as follows:

AS/NZS 1170 series, AS 4100 Steel Structures, AS 1798 and AS 3600.

This verification addresses the structural capacity of the pole including the baseplate in Wind Region C Terrain Category 2.5. The foundation to the pole is based on soil with a minimum bearing capacity of 150 kPa.

All materials and workmanship to be to AS 4100, AS 1798 and AS3600.

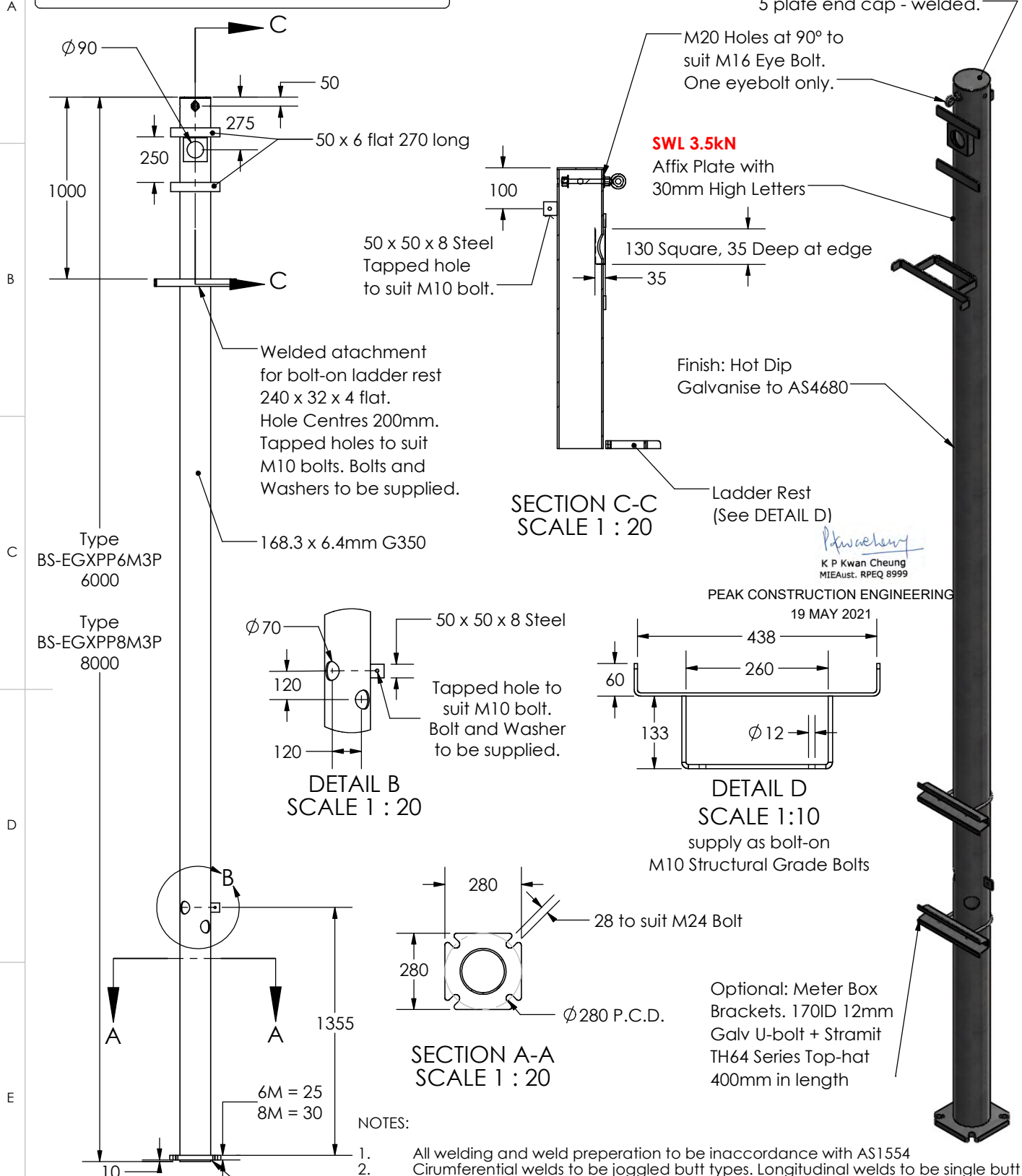
It is also hereby confirmed that the undersigned has been registered as RPEQ prior to 1<sup>st</sup> July 2008 and that his field of expertise is as a Structural Engineer.



K Patrick Kwan Cheung  
MIE Aust RPEQ 8999

**Design in accordance with Queensland Electricity Connection Manual**

Seal end of pipe with 5 plate end cap - welded.



**SWL 3.5kN**

Affix Plate with 30mm High Letters

130 Square, 35 Deep at edge

Finish: Hot Dip Galvanise to AS4680

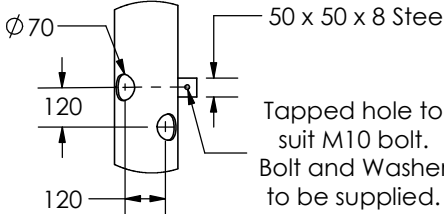
SECTION C-C SCALE 1 : 20

Ladder Rest (See DETAIL D)

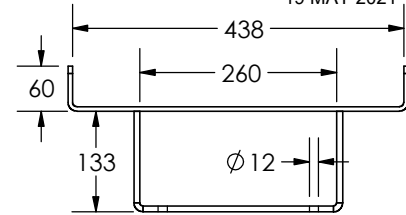
*Phua Cheung*  
K P Kwan Cheung  
MIEAust. RPEQ 8999

PEAK CONSTRUCTION ENGINEERING

19 MAY 2021

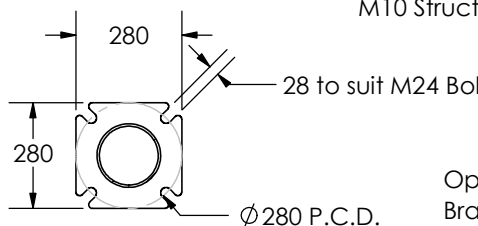


DETAIL B SCALE 1 : 20



DETAIL D SCALE 1:10

supply as bolt-on M10 Structural Grade Bolts



SECTION A-A SCALE 1 : 20

Optional: Meter Box Brackets. 170ID 12mm Galv U-bolt + Stramit TH64 Series Top-hat 400mm in length

NOTES:

- All welding and weld preparation to be in accordance with AS1554
- Cirumferential welds to be joggled butt types. Longitudinal welds to be single butt type. All welds unless noted are to be 5mm continuous fillet welds and are not be dressed smooth
- After fabrication all components are to be acid de-scaled and hot dipped galvanised, minimum 450g.sq.m to AS1650
- Columns are to conform to the requirements of AS4100 and AS1798

6mm Fillet Weld continuous all around on both faces

	NAME	SIGNATURE	DATE	UNLESS OTHERWISE SPECIFIED DIMENSIONS ARE IN MILLIMETERS	Bluesun Poles Pty Ltd PO Box 1683 Coorparoo DC Qld 4151 Ph: 1300 412438
DRAWN	P.D.		10-10-18		
CHK'D				ALL WELDS SHALL BE IN ACCORDANCE WITH AS1554.1 CATEGORY SP.	
APPV'D					
F	REV.	A- 4-9-18		MATERIAL:	DWG TITLE
		B-10-10-18		Steel G350	Energy Queensland 3.5kN Property Service Pole
		C- 8-5-19 Add Meterbox Brackets		FINISH:	DWG NUMBER
		D- 22-2-21 Baseplate change		Hot Dip Galvanised	BS-EGXPP6M3P-210222
				WEIGHT: 160kg (6m) 205kg (8m)	SCALE: 1:75 DO NOT SCALE DRAWING SHEET 1 OF 2

A4

